



# Next stop: Orange Line Improvements.

Orange Line BRT Improvements  
Community Open House Meetings  
March 26 and 27, 2019



**Metro**



# Measure M Transit Projects in San Fernando Valley



# Measure M Transit Projects Schedule



Project	Expected Opening Date (3 year range)
Orange Line BRT Improvements	FY 2025-27
North SFV BRT Improvements	FY 2023-25
North Hollywood to Pasadena Corridor BRT	FY 2022-24
East SFV Transit Corridor - Van Nuys Blvd.	FY 2027-29
Sepulveda Transit Corridor (two phases)	Phase 1 FY2026-28 Phase 2 FY2033-35
Orange Line Conversion to Rail	FY 2057

# Project Funding

## ➤ Phase 1: BRT Improvements

- Measure M and SB-1 Local Partnership Grant Program: \$361 million
- Groundbreaking: Oct. 2018
- Opening: Winter 2024/25

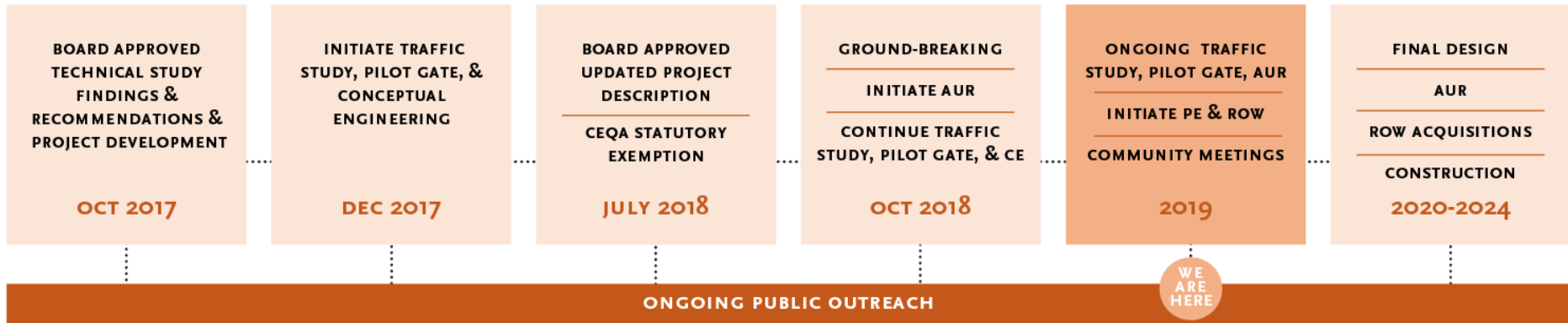
## ➤ Phase 2: BRT Conversion to LRT

- Measure M: \$1.4 billion
- Groundbreaking: 2051



Oct. 2018 Groundbreaking Ceremony at Sepulveda Park & Ride

# Timeline and Process



AUR = Advanced Utility Relocation  
CEQA = California Environmental Quality Act  
CE = Conceptual Engineering  
PE = Preliminary Engineering  
ROW = Right-of-Way Property Acquisition Process  
*(Timeline Subject to Change)*

# Orange Line BRT Improvements

- Gating at up to 35 crossings
- Grade separation and BRT aerial station at Van Nuys, with closure of Tyrone Ave
- Grade separation and BRT aerial station at Sepulveda
- Bike/pedestrian overcrossing at Van Nuys and Sepulveda

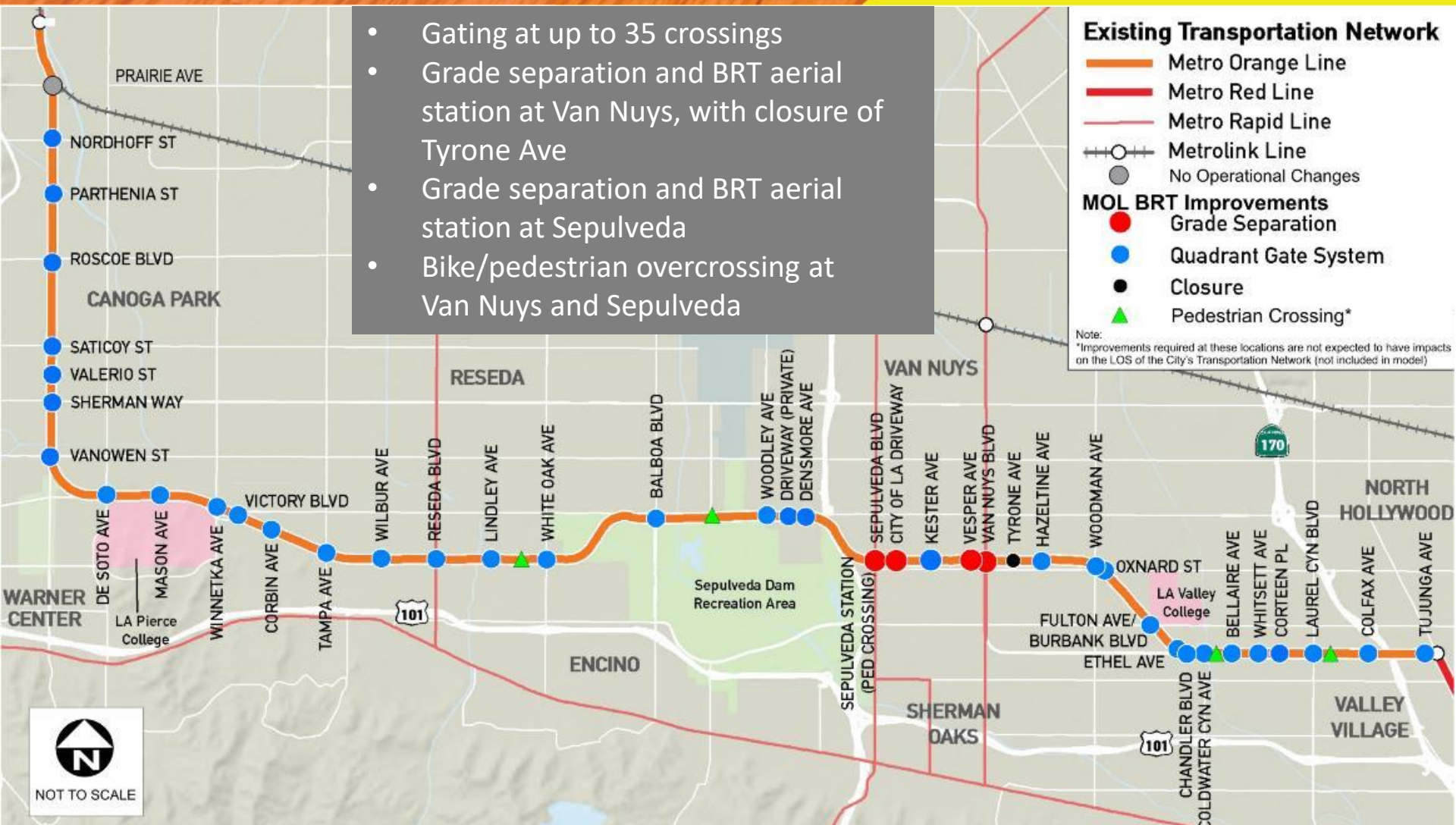
**Existing Transportation Network**

- Metro Orange Line
- Metro Red Line
- Metro Rapid Line
- Metrolink Line
- No Operational Changes

**MOL BRT Improvements**

- Grade Separation
- Quadrant Gate System
- Closure
- ▲ Pedestrian Crossing\*

Note:  
\*Improvements required at these locations are not expected to have impacts on the LOS of the City's Transportation Network (not included in model)



# Gate Systems



## Gating Rendering – Orange Line Vanowen Crossing



*Conceptual rendering; subject to change*

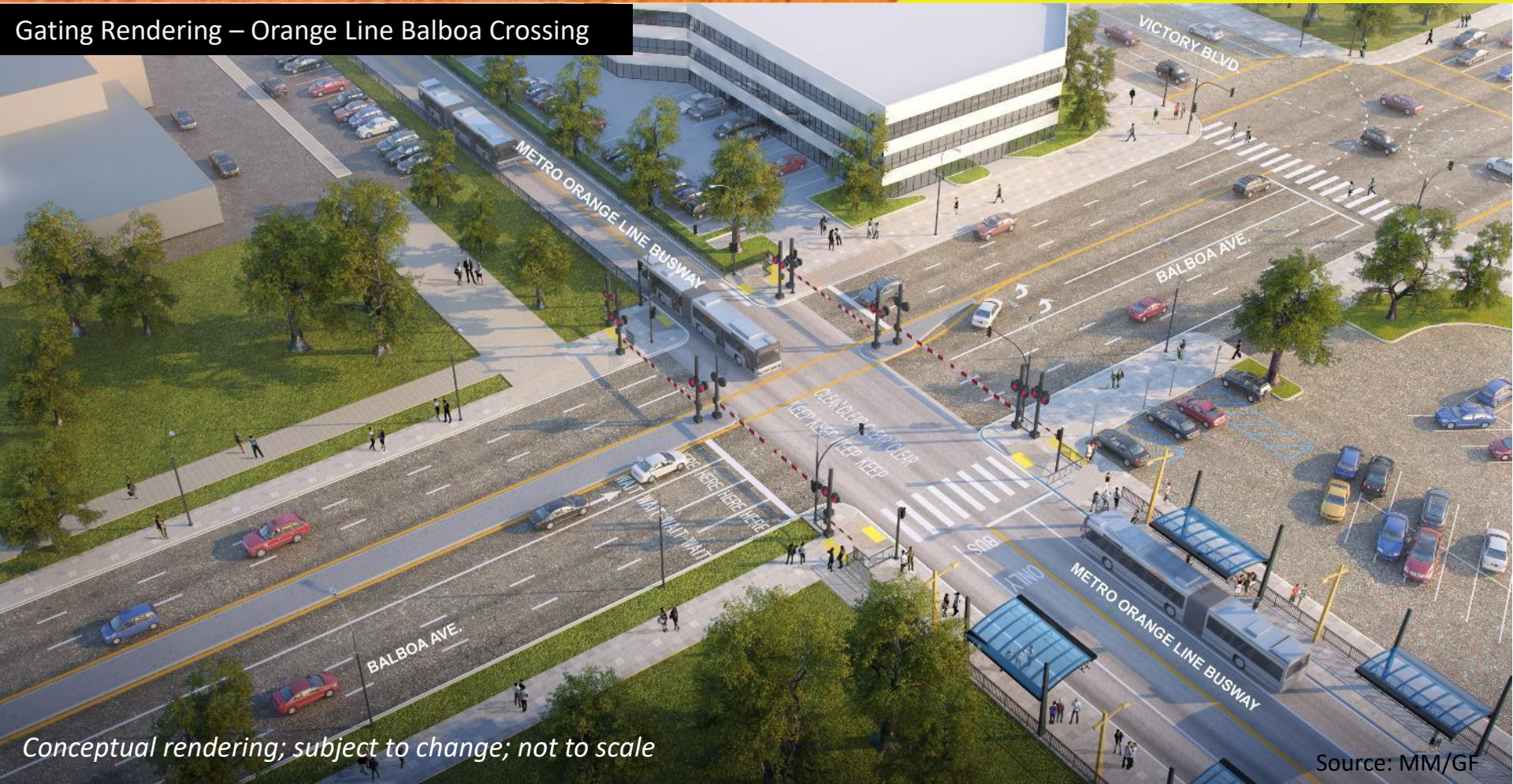
1. Four Quadrant Gate System with Flashing lights and Bells
2. Raised Median
3. Pedestrian/Bicyclist Crosswalk Gates
4. Bike/Ped Path

Source: MM/GF

# Bus Operations with Gates



Gating Rendering – Orange Line Balboa Crossing



*Conceptual rendering; subject to change; not to scale*

Source: MM/GF



# Grade Separations (GS)

## Project Elements:

- GS and aerial station at Sepulveda Blvd
- GS and aerial station at Van Nuys, with closure of Tyrone Ave
- Bike/pedestrian path grade separation at Van Nuys and Sepulveda
- Connectivity with Sepulveda and East San Fernando Valley Transit Projects



MOL - Sepulveda Grade Separation Rendering

# Grade Separations (GS)

## Aerial Station Design Features:

- Side Platforms. 42' Busway (3-14' wide Bus lanes)
- 1 escalator, 1 set of stairs, 2 elevators, and provision for a future second escalator at all 4 corners
- Designed for future conversion to LRT
- Elevated bike path on the north side of elevated busway. Bike Parking at Plaza Level
- Artwork



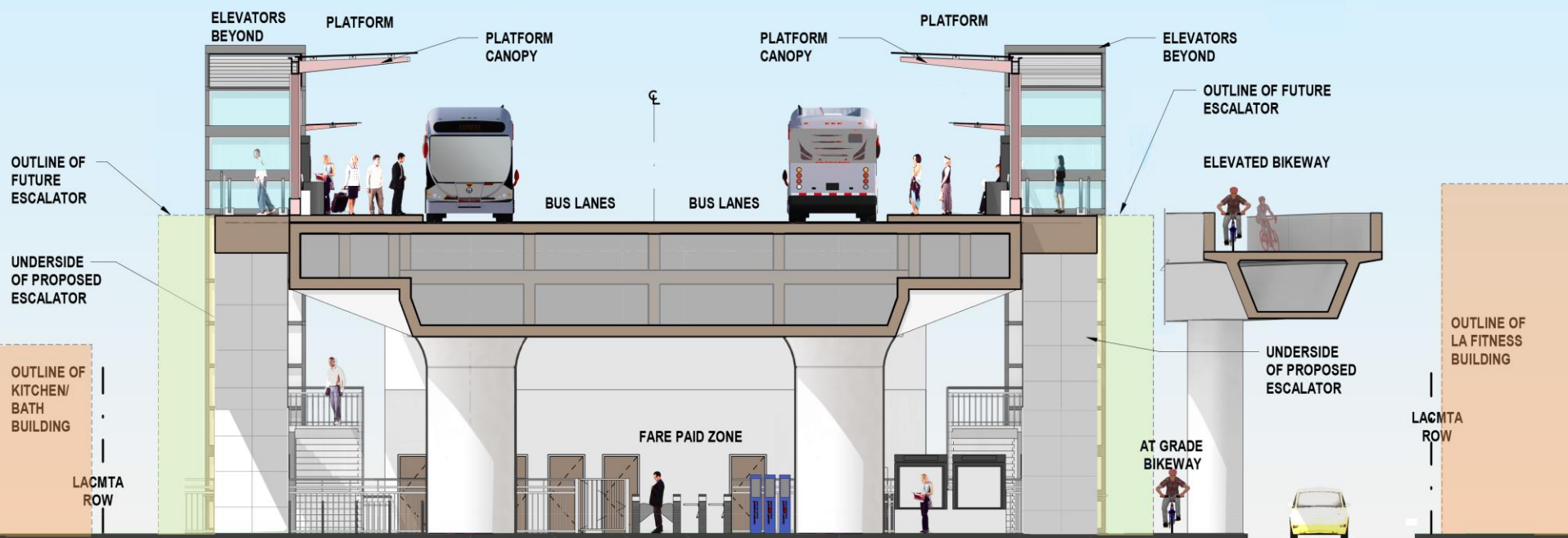
MOL - Sepulveda Grade Separation Rendering

# Elevated Bike Path at Sepulveda and Van Nuys Crossings

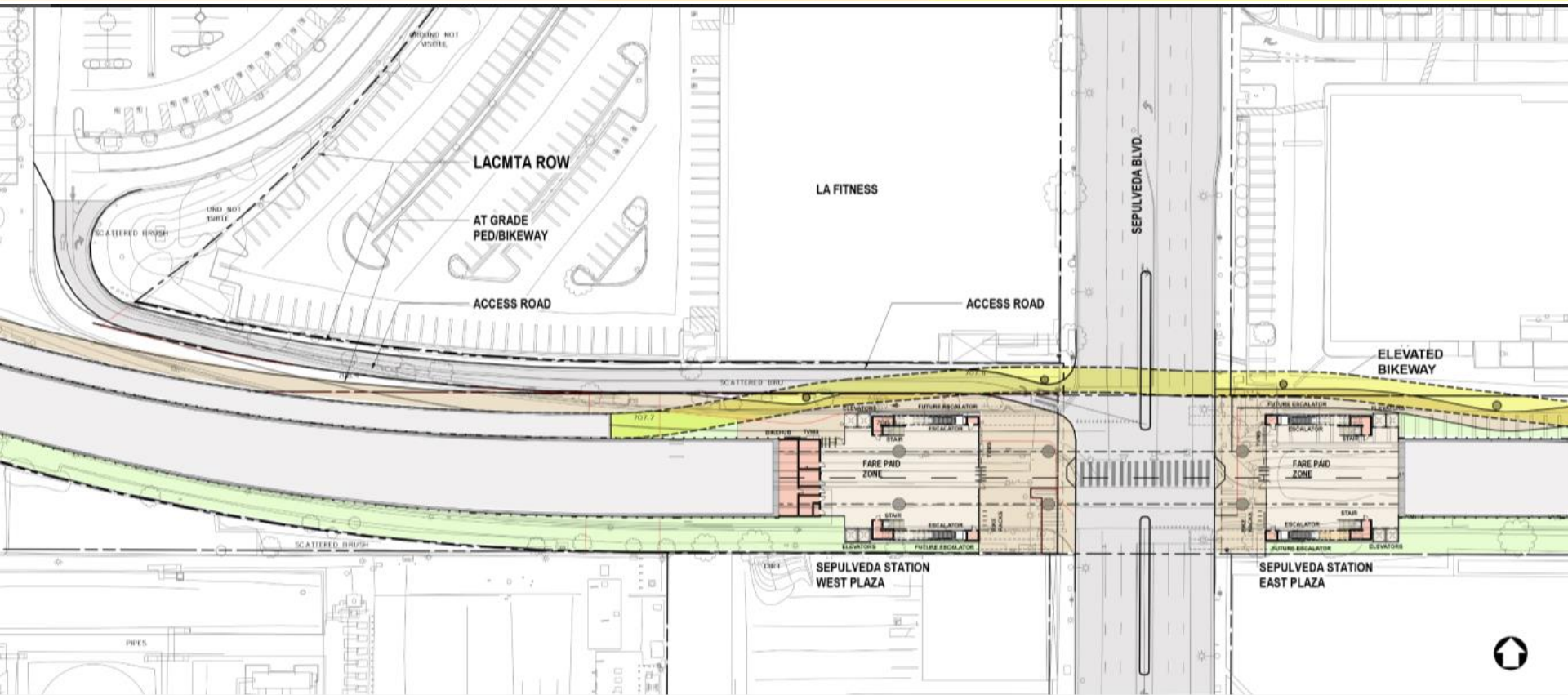


Conceptual rendering; subject to change; not to scale

Source: MM/GF



# Elevated Bike Path at Sepulveda Crossing



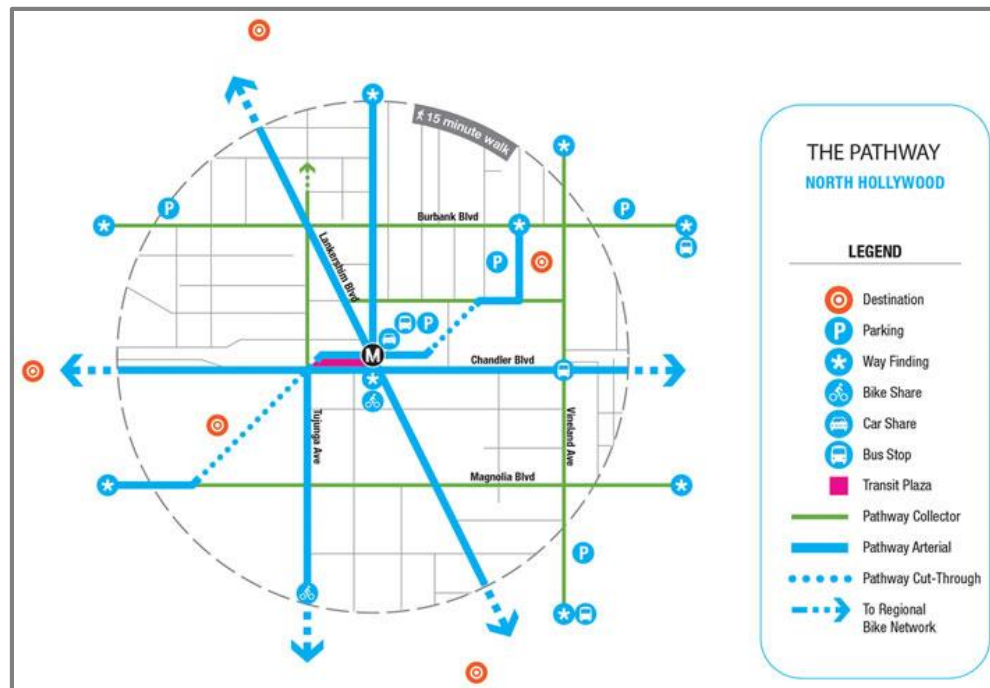
*Conceptual rendering; subject to change; not to scale*

# Pedestrian & Bicycle Access

## First/Last Mile Component:



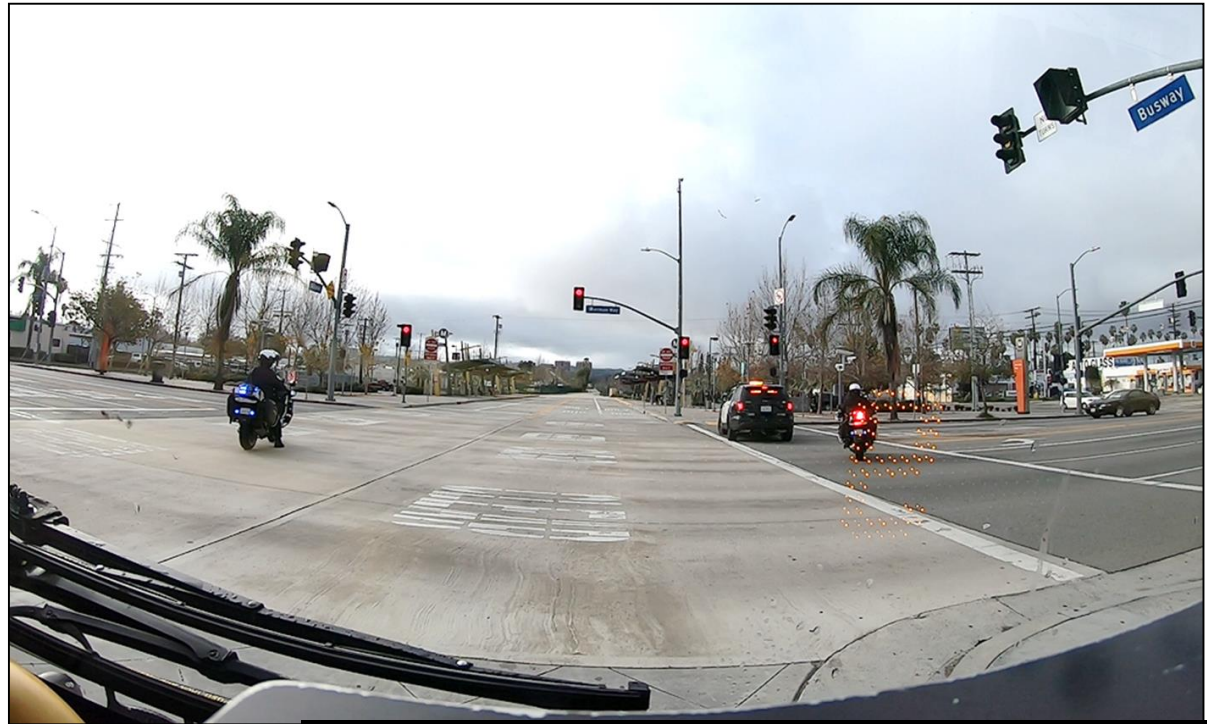
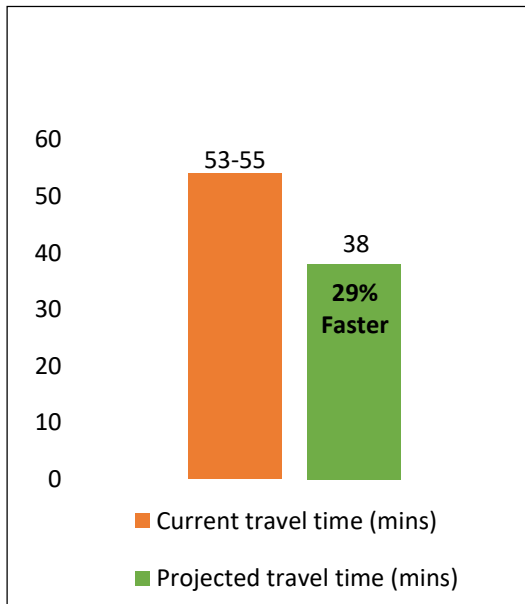
- Most riders access Metro stations without a car
- Study to identify key access routes and plan specific improvements for pedestrians and bicycle riders



# Project Benefits



## MAXIMUM BUS TRAVEL TIME SAVINGS

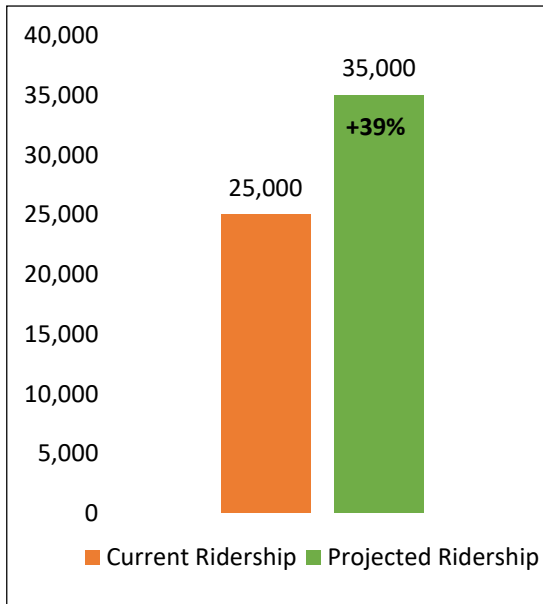


BRT Simulated Test Run with Gate Timing: March 3, 2019

# Project Benefits




## IMPROVED RIDERSHIP & CAPACITY



# Project Benefits



Improvement / Benefit	Existing Conditions (North Hollywood to Chatsworth)	Gates + Grade Separations at Van Nuys and Sepulveda
 <p><b>IMPROVED SAFETY</b></p>	<ul style="list-style-type: none"> <li>➤ Right-turn-on-red violations                             <ul style="list-style-type: none"> <li>• 5,000 – 6,000 monthly violations in 2018</li> </ul> </li> <li>➤ Collisions                             <ul style="list-style-type: none"> <li>• 24 collisions in 2018</li> </ul> </li> </ul>	<ul style="list-style-type: none"> <li>➤ Avoids right-turn-on-red violations</li> <li>➤ Reduces the risk of collisions</li> </ul>



Conceptual rendering; subject to change; not to scale Source: MM/GF 16



# Zero Emission Buses

➤ 45 new battery electric buses

➤ Benefits:

- No tailpipe emissions
- Quieter operation
- Electric drive motors
- Electric accessories
- Better performance
- Better ride quality

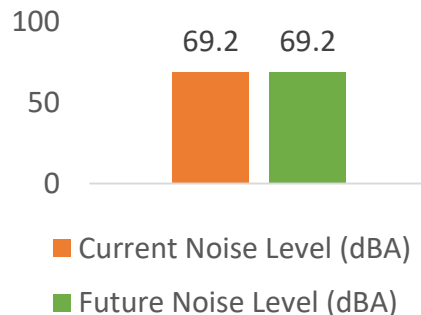


# Noise Study Results

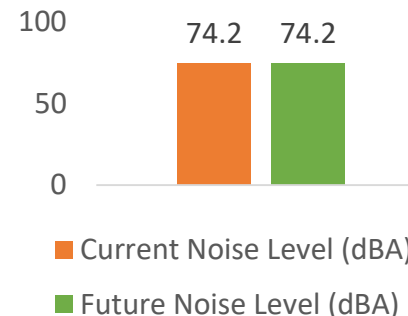


Quieter electric buses offset the noise introduced by the gate warning bells. Plans to run two bus 'platoons' to increase capacity during rush hour reduces the number of times the bells would be triggered.

**Laurel Cyn Blvd to Coldwater Cyn Blvd (Typical)**

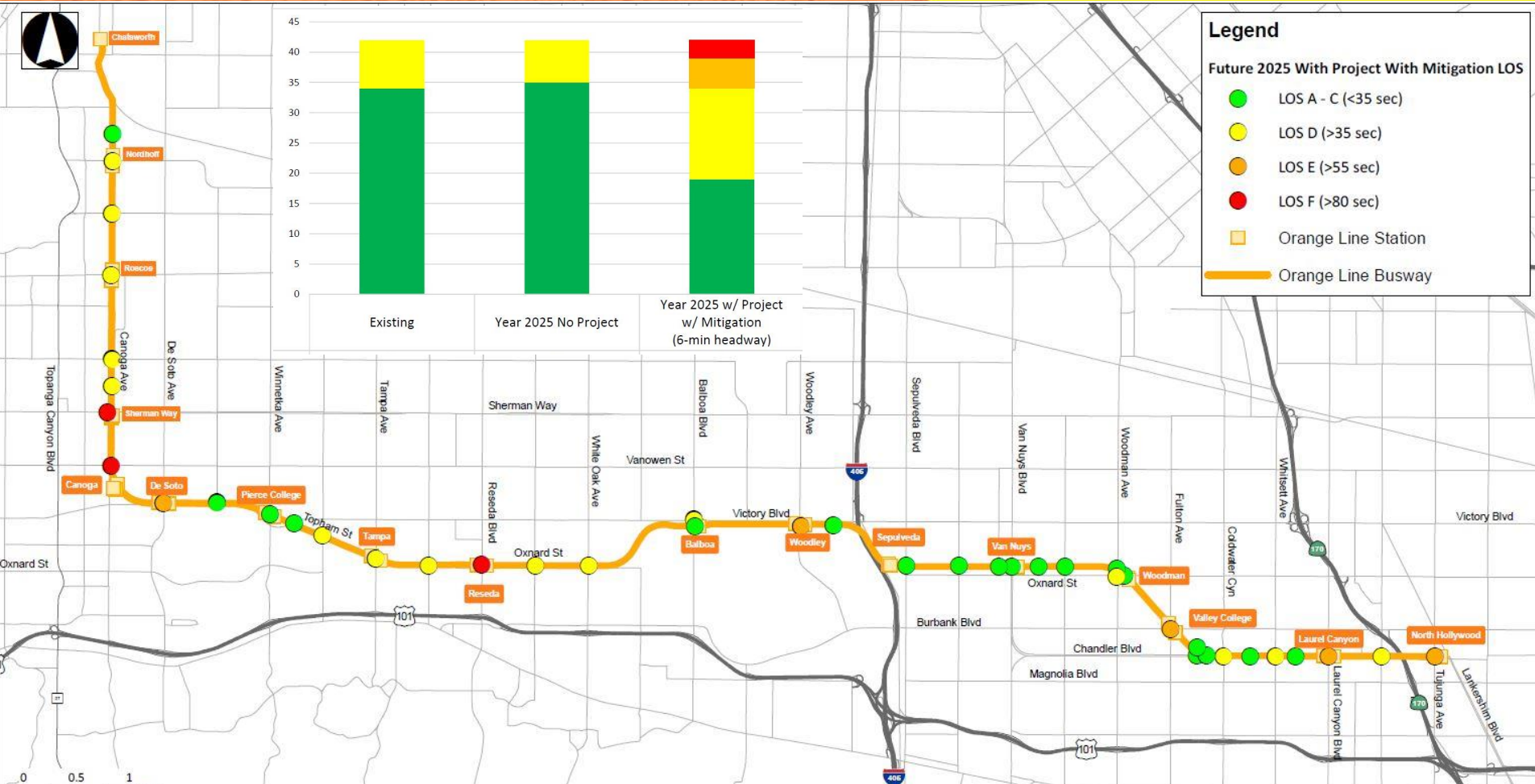


**White Oak Ave to Reseda Blvd (Typical)**



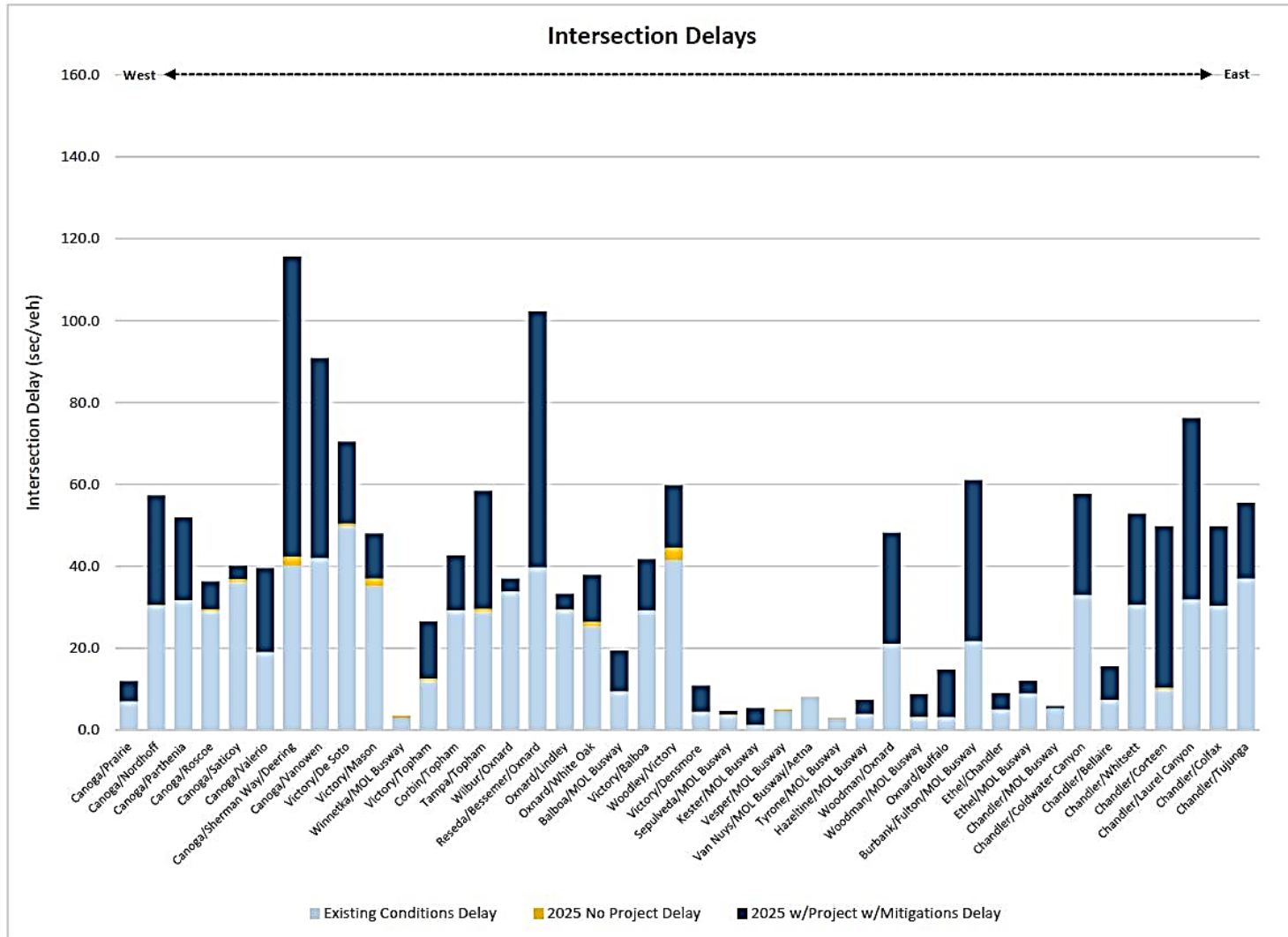
# 2025 Traffic Analysis Results

## 6-minute headways (PM Peak Hr)



- 23 of 42 analyzed intersections are significantly impacted by the Project, per LADOT “significant” traffic impact thresholds
- 34 intersections (81%) are projected to operate at LOS D or better
- 8 Intersections at LOS E/F.

# Existing Plus Project-related Overall Intersection Delay Increase (PM Peak Hr)



# Mitigation Measures

- Signal Phasing Modifications
- Street Reconfigurations
- Additional mitigation measures to be considered based on:
  - Pilot gates
  - Innovative technology for gate activation system
  - Bus platooning options



# Community Outreach



## ➤ Community Open House Meetings

- **March 26, 2019, 7:30 - 10:00am**  
**Rose Goldwater Community Center**  
21710 Vanowen St.  
Canoga Park, CA 91303
- **March 27, 2019, 4:30 – 7:00pm**  
**North Hollywood Senior Center**  
5301 Tujunga Ave  
North Hollywood, CA 91601

## ➤ San Fernando Valley Service Council Presentation

- April 3<sup>rd</sup>

- Pop-up events at MOL stations
- Metro Real Estate ongoing property owner/tenant contact





# Q&A

# We Want to Hear From You



Fulgene Asuncion  
Project Manager, Metro  
One Gateway Plaza, 99-22-4  
Los Angeles, CA 90012



888.316.3889



[orangeline@metro.net](mailto:orangeline@metro.net)



[metro.net/orangeline](http://metro.net/orangeline)



**Metro**







Thank You!

